

# Milda Spindler

Available Works: March 5, 2022

Etchings, Wood and Linoleum Cuts Prints

Oil Paintings



# A Review of Print Making: Etchings

- Etching is a printmaking process that dates back 500 years. It involves sheets of metal, usually made of copper or zinc, and acid used to etch the print onto the metal. The artist can use complicated methods to create different effects, but always relies on acid to create an image on the plate. The more complicated the image, the more time consuming and expensive it will be.



Instruments to carve on plate



Copper  
Plates

## A Review of Print Making: Etchings

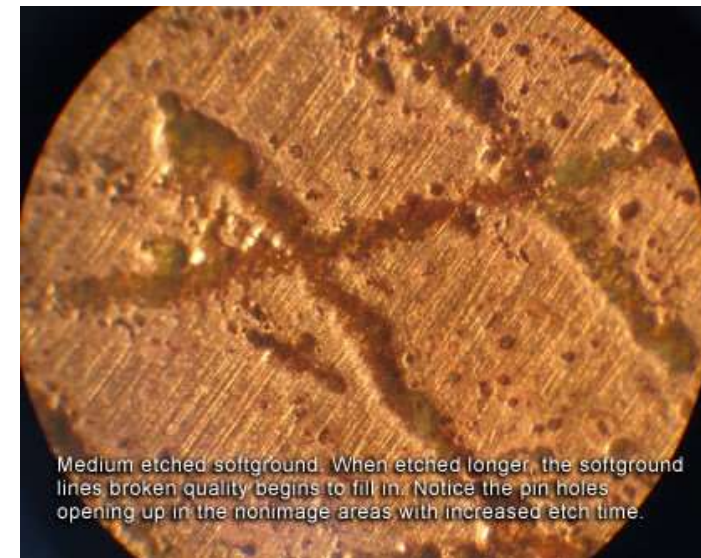
- To begin an etching, an artist must first coat a blank copper plate with wax. Using a steel needle, she draws her intended picture through the wax and onto the metal. The metal is then submerged into a bath of acid and left for about two hours. The acid will eat away at the copper that has been exposed by the needle to leave grooves, marks, and textures in the metal.



## A Review of Print Making: Etchings

- The plate is then taken out of the acid bath and the wax is cleaned off, leaving a shiny, copper plate with the image etched onto it. This can be repeated again and again by rewaxing the plate. By rewaxing, the artist can add layers or more complicated images onto the original drawing, then put it back into the acid bath once she is happy with the image she has.

Plate  
Preparation





## A Review of Print Making: Etchings

- The next stage of the process is to apply printing ink into the lines of the plate. Once the plate is wiped again with a stiff cloth, it will leave the ink in the lines and grooves. The inked plate is then placed in a hand- printing press with two heavy rollers, and damp paper is placed on top of the plate and squeezed through the rollers using great pressure.



Etching press



Etching paper

## A Review of Print Making: Etchings



- When the paper is carefully peeled off, the image will be printed onto it. People can always tell a genuine etching because the edges of the plate will leave an indentation on the paper. If an artist wants to make another print, she simply puts more ink onto the plate, wipes it off, and then puts it back through the rollers with another piece of paper. The end result is the simplest form of etching.

## A Review of Print Making: Etchings

- There are more complicated ways to create more intricate etchings by using a number of different plates and colors. There is also a process to add different tones to the image that involves adding resin dust to the plate and heating it. The result looks like fine sandpaper, and the artist simply varnishes the plate wherever she doesn't want this texture. When she puts it in the acid bath, the acid will eat away at the resin dust to give a texture that holds the ink. The longer the plate is left in the acid, the darker the tones will be.

All of her prints and paintings follow.



Restin, aquatint print



Milda Spindler

Title: Beach Comber

Year: 1997

Medium: Etching Aquatint

Size: 3.5" x 5.75" / 8.9cm x 14.6cm

The "Beach Comber" etching shows a young woman, walking along the shoreline, shading herself with the umbrella on a hot day as she searches for seashells.

2 available





Milda Spindler

Title: The Bather

Year: 1998

Medium: Etching Aquatint

Size: 6.88" x 7.25" / 17.48 cm x 18.4 cm

The "The Bather" etching depicts a young woman at the beach shading herself from the sun with an umbrella.



1 available, 1 in B&W



Milda Spindler

Title: The Surfer

Year: 1996

Medium: Etching Aquatint

Size: 6" x 8.75" / 15.24 cm x 22.22cm

My etching titled "The Surfer," depicts a young woman walking in the sea spray of breaking waves carrying her surf board, as she looks backward to see if anyone is watching her.

1 available horiz  
1 available vertical





Milda Spindler

Title: Shells

Year: 1998

Medium: Etching Aquatint

Size: 6.75" x 9" / 15.88cm x 22.86 cm

The "Shells" etching depicts a collection of different sea shells collected along the shoreline of the Gulf of Mexico

1 available





Milda Spindler

Title: The Robin

Year: 1995

Medium: Etching Aquatint

Size: 5.25" x 8" / 13.33cm x 20.32 cm

My etching "The Robin" depicts an alert, solitary robin in front of an iris, ready for flight.

1 available



Milda Spindler

Title: Corn Husker

Year: 1998

Medium: Etching Aquatint

Size: 5.88" x 9" / 14.9cm x 22.86 cm

"Cornhusker" depicts a young boy, sitting with his treasure of hand-picked, ripened corn that he intends to have for dinner with his family.

1 available





Milda Spindler

Title: Lafitte's Blacksmith Shop  
Year: 1998  
Medium: Linoleum Cut  
Size: 9" x 12" / 22.86cm x 30.48cm

"Lafitte's Blacksmith" Shop is a linoleum cut print showing the old blacksmith shop in The New Orleans French Quarter, which is bordered with banana trees





Milda Spindler

Title: St. Charles Street Car

Year: 1996

Medium: Etching Aquatint

Size: 11.87 x 9"/ 21.6cm x 29.21 cm

This etching is of the street car rolling down Saint Charles Street, which shows the still-running remnant of the glorious past in New Orleans Louisiana.



1 available



Milda Spindler

Title: Sea Gulls

Year: 2002

Medium: Etching Aquatint

Size: 7.75" x 6.13" / 19.69cm x 15.57cm

"Seagulls" portrays the small group of birds feeding on small sea life as the waves roll in along the seashore..



1 available

Milda Spindler

Title: Pirates Alley

Year: 1997

Medium: Etching Aquatint

Size: 8.75" x 12" / 22.2cm x 30.48cm

"Pirates Alley" is an etching that depicts the famous alley way on the side of New Orleans' St. Louis Cathedral, where pirates would often stop and pray.

available





Milda Spindler

Title: Sad Harvest

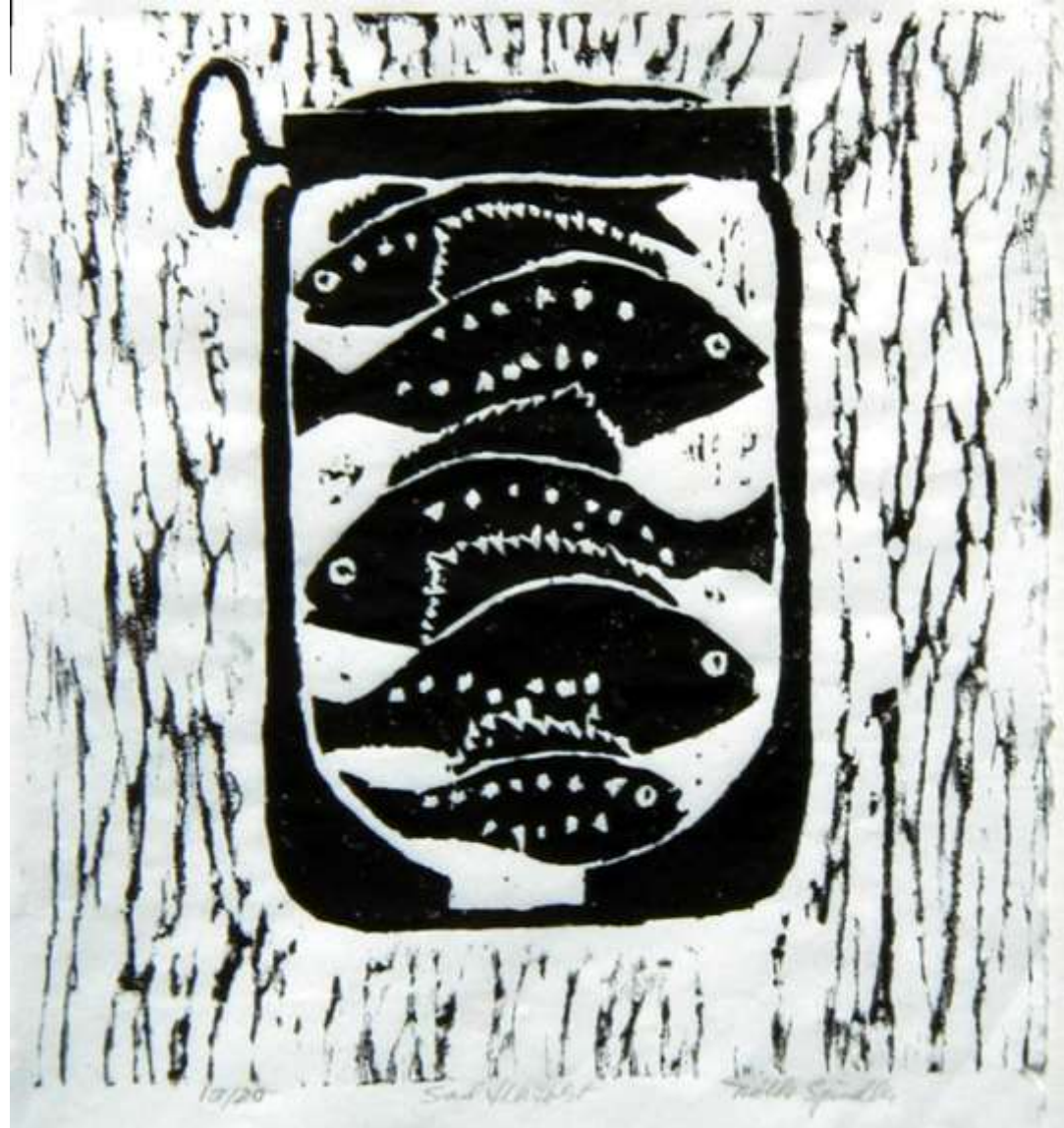
Year: 1981

Medium: Linoleum Cut Print

Size: 7.5" x 9.25" / 19.05cm x 23.50cm

"Sad Harvest" is a wood cut print that demonstrates how these poor fish grew up and had the misfortune of getting caught in a fisherman's net.

1 available



Milda Spindler

Title: Watermelons

Year: 1983

Medium: Etching Aquatint

Size: 7.5" x 8" / 19.05 cm x 20.32cm

"Watermelons" shows a mother and father so preoccupied with reading their newspaper that they completely forget about their child, while they try to sell their produce.

1 available





Milda Spindler

Title: Three Gardeners

Year: 1980

Medium: Etching Aquatint

Size: 5.25" x 8" / 13.34cm x 20.32cm

The "Three Gardeners" etching represents a father teaching his two sons how to dig up a garden for planting so that one day they can provide food for their family.

1 available





Milda Spindler

Title: A View of Nature

Year:1998

Medium: Pressed Plant Etching

Size: 5.75 x 9"

“A View of Nature” was created by fixating the flower and fern to a plant then completing the print process to create the unique piece.

available



Milda Spindler

Title: Pileated Woodpeckers

Year: 1995

Medium: Wood Cut Print

Size: 12" x 12" / 30.48cm x 30.48cm

"Pileated Woodpeckers" is a wood cut print of these beautiful birds that are mostly black with a red chest and found nesting in hollow trees found widely in Louisiana.

1 available





Milda Spindler

Title: Bayou Cabin

Year: 1986

Medium: Linoleum Cut Print

Size: 8" x 9.75" / 20.32cm x 24.77cm

"Bayou Cabin" depicts a typical Cajun built cabin in the swamp areas of Louisiana where people lived on the sides of a bayou.

available





Milda Spindler

Title: Lone Gardner

Year: 1986

Medium: Etching Aquatint

Size: 5.25" x 8" / 13.34cm x 20.32cm

"Lone Gardner" shows the gardener, which happens to be a self-portrait of the artist, digging in the garden and enjoying her solitude.

1 available





Milda Spindler

Title: Bananas

Year: 1994

Medium: Etching Aquatint

Size: 5.50" x 9.0" / 13.97 cm x 22.86cm

"Bananas" is an etching of these lush tropical plants on my property that bring me fresh fruit every year.



Milda Spindler

Title: Three Santas

Year: 1997

Medium: Etching Aquatint

Size: 5.75" x 8.75 " / 14.61 cm x 22.20 cm

"Three Santas " is an etching depicting three men dressed in Santa Claus costumes, in front of a large store collecting money for charity.

1 available





Title: The Pitcher Plant  
Year: 1987  
Medium: Etching Aquatint  
Size: 6 x 9"

The pitcher plant catches unsuspecting insects and small animals. They grow in boggy acid soils in pine woods the pinewoods areas of Mississippi and Louisiana

1 available



Title: The Spiderwort Plant

Year: 1987

Medium: Etching Aquatint, hand painted

Size: 3" x 4"

1 available





Title: The Shrimp Plant

Year: 1994

Medium: Aquatint

Size: 5.75 x 7.75"

The etching depicts a beautiful tropical shrub often found in pots on patios or in gardens near entryways displayed as attention getters. The bright -pink to salmon-colored flower make a unique shrimp-like appearance.

2 available





Title: "The Crab"  
Year:  
Medium: Etching Aquatint  
Size: 5 x 5.75"

1 available





Title: Blue Crabs  
Year: 2004  
Medium: Linocut  
Size: 6 x 6"

The blue crab is found all around Louisiana's coastal areas as well as other areas lining the Gulf and Atlantic coastlines. It is a favorite dish of locals.



1 available

Title: Three Crabs

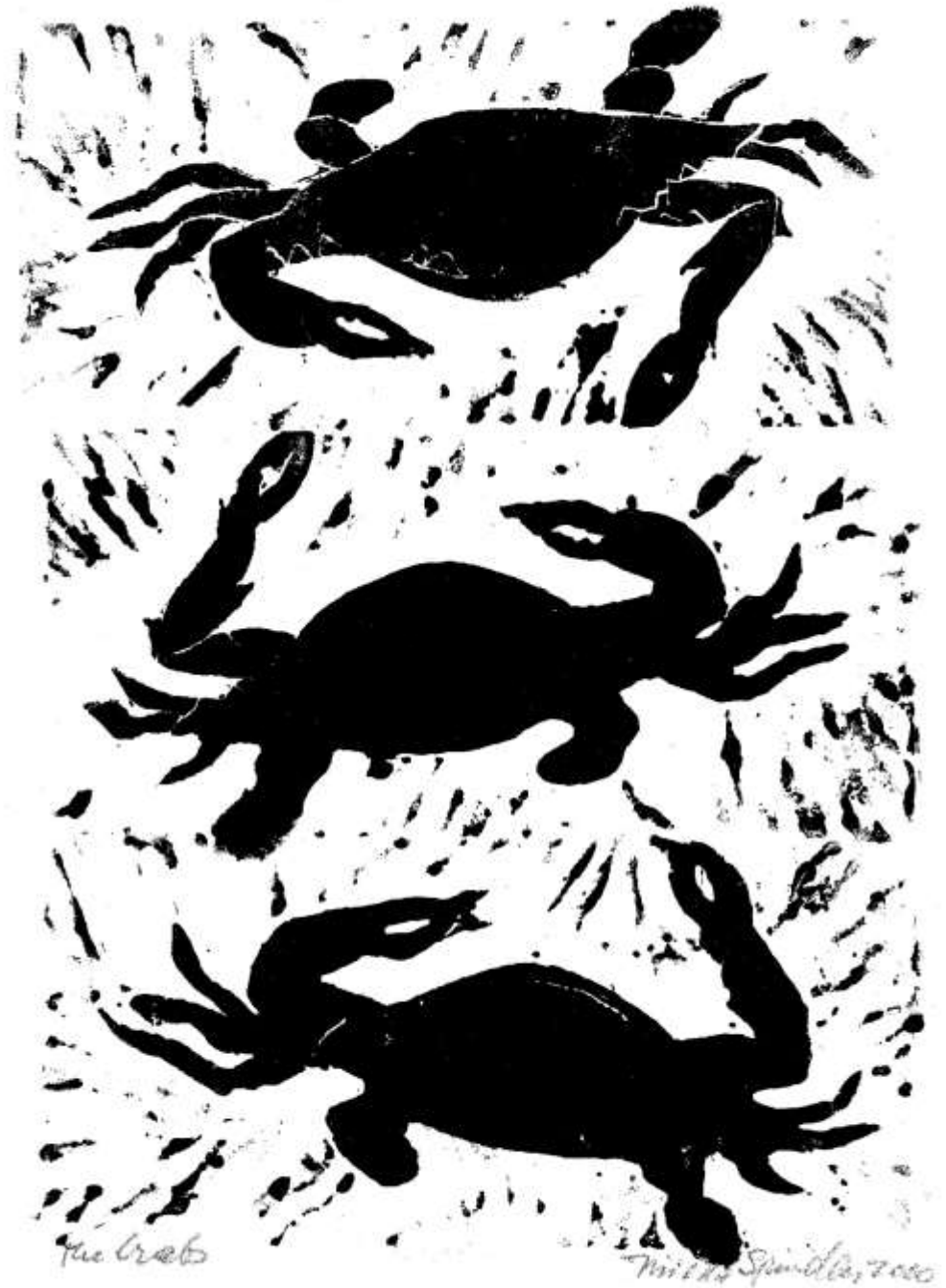
Year: 2004

Medium: linocut

Size: 6 x 9"

The blue crab is found all around Louisiana's coastal areas as well as other areas lining the Gulf and Atlantic coastlines. It is a favorite dish of locals.

1 available





Title: Labradors  
Year: 1985  
Medium: Etching  
Size: 8.5 x 5.5"

The Labrador Retriever is one of the most popular dog breeds and they are affectionate, energetic and friendly. In her lifetime the artist had three of these beautiful companions.

3 available



Title: The Fledgling  
Year: 2007  
Medium: Wood Cut  
Size: 6.25 x 8"

In the Fledgling print Milda depicts a young egret taking off in flight for the very the first time.



available



Title: The Felines  
Year: 1994  
Medium: Etching  
Size: 5 x 6.5"

The Felines etching was inspired by the artist's granddaughter's Siamese cat and was initially done as a gift for her.

1 available





Title: Orchid and Fern

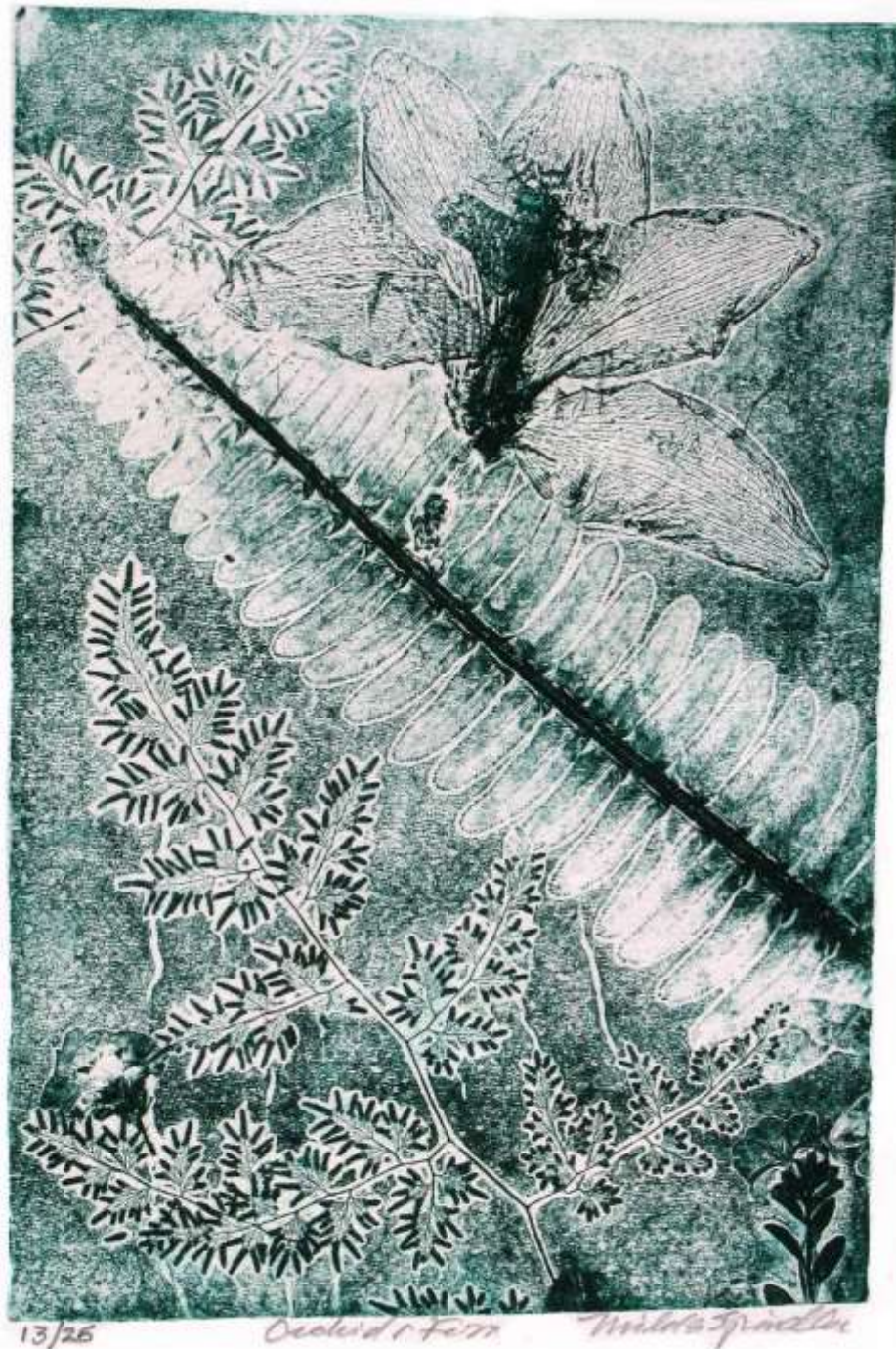
Year: 1987

Medium: Pressed Plant Etching- Aquatint

Size: 5.75 x 9"

"Orchid and Fern" was created with the same technique of fixating the flower and fern to an etching plate then completing the print process to create the unique piece.

1 available





Title: The Wash

Year:1987

Medium: Monoprint

Size:

This is a unique form of printmaking where the image can only be made once, unlike most printmaking which allows for multiple originals. Milda did two beautiful oil paintings in her series of The Wash, one of which is in the collection at The Lithuanian Art Museum in Vilnius.



1 available

Title: Wood Ducks  
Year: 1979  
Medium: Wood Cut  
Size: 12.25 x 9.50"

In this print we see a pair of wood ducks coming in for a landing before they settle in for the night in a Louisiana marsh.

2 available





Title: Atchafalaya

Year: 1994

Medium: Etching Aquatint

Size: 12 x 8.75"

The Atchafalaya river basin is a beautiful part of Louisiana and is home of some of the oldest cypress trees. The area is teeming with life.

1 available



Title: My Huckleberry Friend

Year: 1981

Medium: Wood Cut

Size: 11.25 x10.5"

My huckleberry friend depicts a young boy sitting in a southern huckleberry tree [Mulberry?]. No doubt, he enjoys the bright red fruit, which are sometimes referred to as southern cranberries.

1 available





Title: Near Kiln

Year: 1999

Medium: Wood Cut print

Size: 11.5 x 11.5"

An old farming structure, in a state of disrepair sits down the road from our property midway between Picayune and Kiln, Mississippi.

1 available





Title: Duck Courtship

Year: 2000

Medium: Etching

Size: 3.25 x 5"

Frequently seen in the waters of Louisiana, mallard ducks are beautiful wintering visitors. "Duck Courtship" depicts two mallards in the mating season.



1 available



Title: The Chefs  
Year: 1987  
Medium: Etching

New Orleans is a city where restaurant dining is and art. "The Chefs" is an etching of two chefs hard at work in their kitchen.



Title: The Swan

Year: 2004

Medium: wood cut

Size: 7.5 x 9.25"

Swans with their graceful long necks glide majestically through the waters of City Park in New Orleans. Semi-domesticated Mute Swans are plentiful year-round in many of the waterways in Louisiana.

1 available





Title: Louisiana Pelicans

Year: 1989

Medium: linocut

Size: 7.25 x 9.50"

The state bird of Louisiana is the brown pelican. They can be found flying along the shores of The Gulf of Mexico just off Louisiana's coastline. It is the only dark pelican and is often seen plunging from the air into the water to catch its food.

3 available



Title: Twosome

Year: 1996

Medium: Linocut Print

Size: 6.25 x 8"

The Twosome print depicts two deer getting acquainted.



1 available



Title: WaterTurkey

Year: 1989

Medium: Etching Aquatint

Size: 9.5 x 7.5"

Water Turkey is an etching of these water dwelling, southern birds, whose feathers lack oil. It is also known as The Anhinga. After each dive to feed, they must perch with wings spread wide open to dry before they can fly.

1 available





Title: Zebras

Year: 2001

Medium: linoleum cut print

The “Zebras” depicts two zebras from Audubon Zoo New Orleans, enjoying their time together in the park.

1 available





# Oil Paintings

Half Dome  
Oil on canvas  
24" x 36"

The famous  
Yosemite  
landmark.

available





The Hag, the Nag and  
the Pig.  
Oil on canvas  
30 x 40"



available



The Wash  
Oil on canvas  
24" x 36"



available



Seascape  
Oil on masonite  
24 x 36"



available



Florida Beach Landscape

Oil on canvas

24 x 36"

Sea oats and sea gulls on a  
Florida panhandle beach at  
sunrise

available





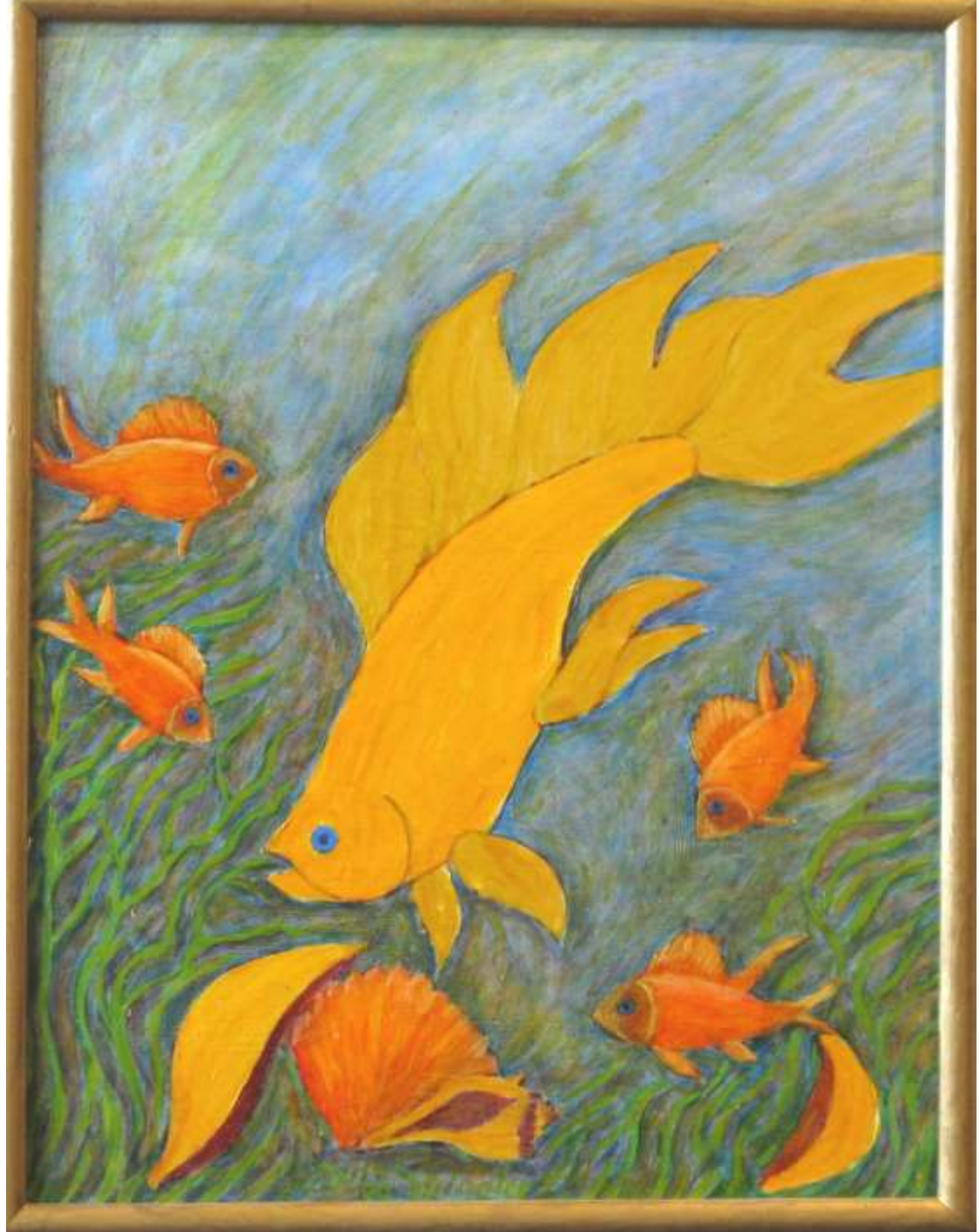
At the Beach  
Oil on masonite



available

Tropical Fish  
Oil on masonite

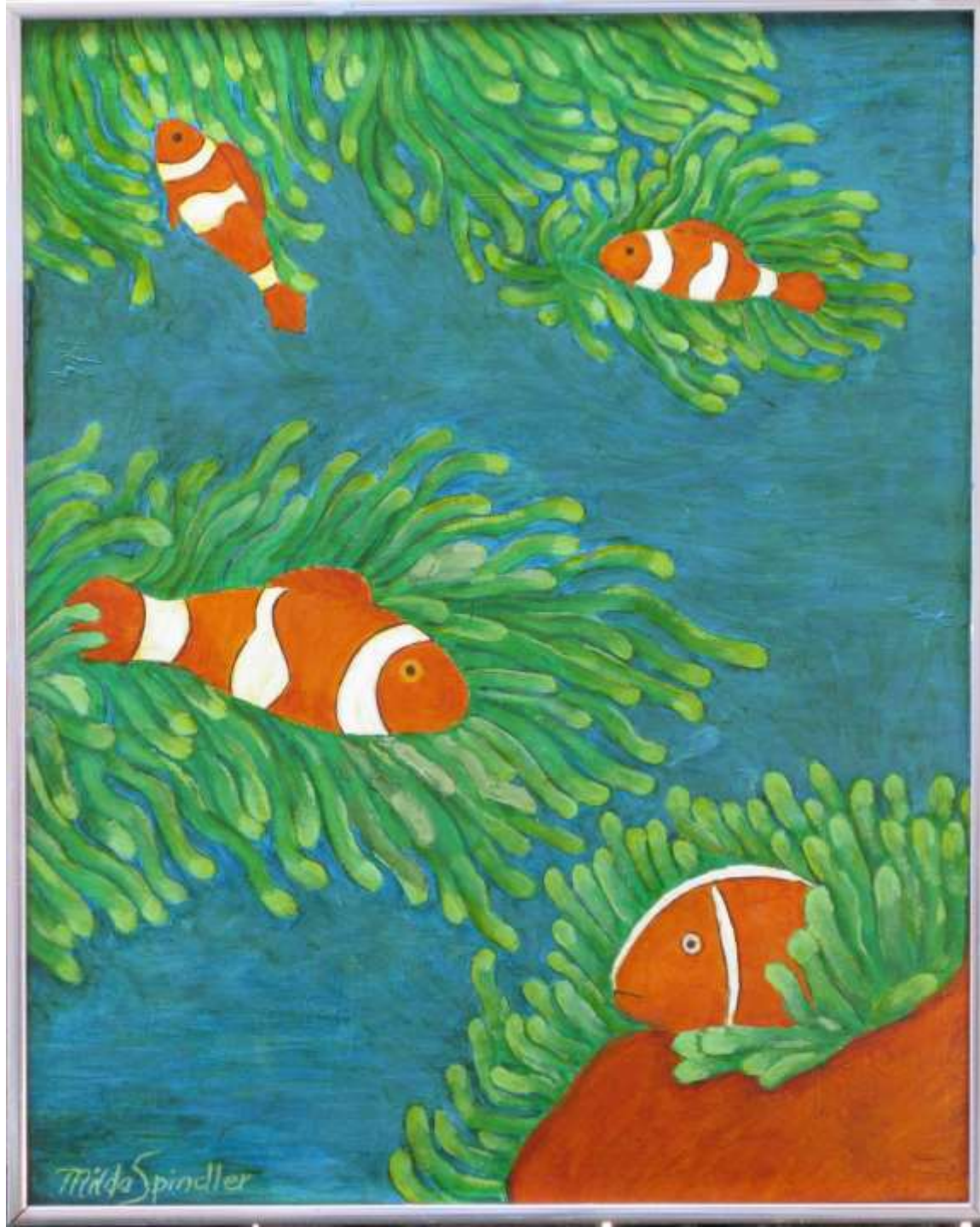
available





Clownfish  
Oil on masonite  
16 x 20"

available



Water Lillies  
Oil on canvas  
16 x 20"



available



African Iris in Spring  
Oil on masonite  
18 x 24"



available

Wild Yucca 1  
Oil on masonite  
15 x 18"

available





Wild Yucca 2  
Oil on canvas  
15 x 18"

available



Azalea and Dogwood  
Oil on masonite  
8 x 10"

available





Irises  
Oil on masonite  
15 1/2" x 19 1/2"



Dogwood  
Oil on masonite  
36 x 24"

available





Five Oaks  
Primaturn on masonite  
14 x 17"

available

